



RK26

series

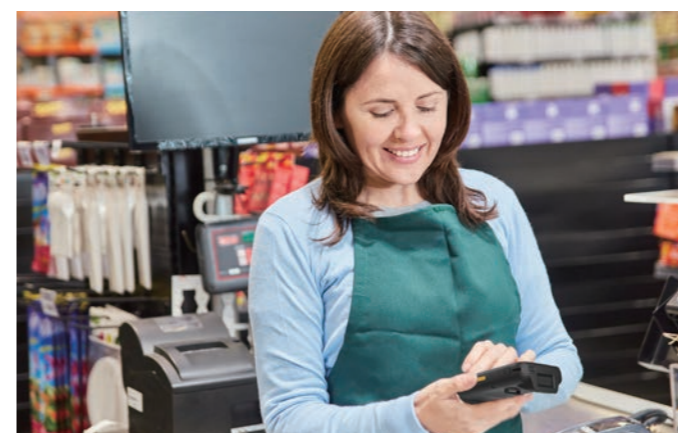


Efficiency and Accuracy Enhanced with Haptic Feedback Keys

The durable RK26 rugged mobile computer enhances operational efficiency in retail and light-duty warehouses. Designed with user-friendly features, advanced capabilities, strong wireless connectivity, and versatile data capture functions, the CipherLab RK26 ensures reliable performance, improved workflow, and increased productivity.

Durability to Thrive in Challenging Environments

The rugged CipherLab RK26, with an IP65 rating, up to 1.8m impact resistance, and 300 tumbles at 0.5m, suits various indoor and outdoor tasks. Its Corning Gorilla Glass shields the screen from scratches. The replaceable and rechargeable 4000mAh battery ensures extended productivity. Additionally, it offers an ergonomic-shaped battery option, allowing comfortable one-handed operation for users.



Large Screen and Responsive Keys for Efficient Workflow

The RK26 offers a 4-inch multi-touch screen with auto-adjustable backlighting and 500-nit brightness for optimal readability. Reading angles of 10° and an optional 70° ensure easy on-screen data checks. Its compact and ergonomic design reduces fatigue during extended use, allowing comfortable one-handed operation. High-feedback buttons enable glove-friendly use and faster typing. The non-fading industrial keypad ensures visibility over time. Available in 25-key and 28-key models, the RK26 caters to diverse user needs.

Seamless Data and Image Capture for Enhanced Productivity

CipherLab's RK26 offers reader engine options (standard, mid, and advanced) for versatile selection. It captures data from over 12.2m away. With a 16MP PDAF rear camera, the RK26 takes clear images with quick focus. It incorporates OCR (Optical Character Recognition) technology, enabling to extraction of characters via both camera and scan reader, streamlining tasks and reducing typing errors.

Trustworthy Wi-Fi and Real-time Communication

The RK26 offers advanced wireless connectivity for an enhanced networking experience. Featuring Wi-Fi 6, it ensures faster, more reliable connections with security and low latency. The RK26's 2x2 MU-MIMO improves speed and efficiency, even in crowded environments. With 4G LTE, swift file transmission keeps mobile workers connected.

The RK26's USB Type-C port supports seamless data transfer and an additional charging option. With Bluetooth 5.1 and NFC, the device offers robust wireless capabilities for quick connections to printers, headsets, and more.

Maximizing Efficiency in Inventory Management with UHF RFID Capabilities

The RK26 extends its UHF RFID capability through the UHF RFID reader attachment. Its read and write functions enhance inventory management efficiently and cost-effectively. It achieves a reading rate of 700+¹ tags per second at distances exceeding 8 meters, and over 1000+² tags per second at over 10 m. Software utilities such as RFID Android SDK, EZCong, and EZEdit are available, saving time in the development and deployment of RFID solutions.

1. Based on Impinj R2000 chip
2. Based on Impinj E710 chip. Availability of this model is subject to confirmation upon official announcement. Please check with our sales representative for the most current information.

Powerful Performance and Security for Continuous Productivity



Powered by a Qualcomm octa-core 2 GHz processor, the RK26 delivers impressive speed, app performance, and battery efficiency. Users can experience seamless app use and web browsing. The RK26's GMS (Google Mobile Service) verification ensures compatibility with Google applications, and it operates on Android 12 (upgradeable to Android 14) with AER (Android Enterprise Recommended) certification for enterprise security. The RK26's 4GB/64GB memory effortlessly handles various workloads, offering powerful and reliable performance for efficient and secure task completion.

Maximize Your CipherLab Gear to Make It a Total Solution



ReMoCloud is mobile device management software developed by CipherLab to efficiently manage remote devices over the internet. Administrators can use this to gain visibility into employee devices.



CipherLab's full-featured and enterprise-oriented tools help IT technicians or SI develop mobile device configuration projects for various needs.



These tools enable field workers to work seamlessly and efficiently using a user-friendly Android interface.

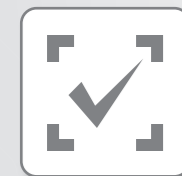
Empowering Operational Excellence with a Receptive, Reliable, and Resilient Designed Solution



Two keypads: 25-key (2 function keys) and 28-key (4 function keys). Responsive keys ensure precise input for dedicated functions.



Easily add UHF RFID capability by simply attaching the RK26 to its UHF RFID reader.



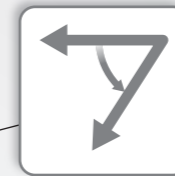
Read 1D/2D barcodes, NFC cards, and RFID tags. Choose from standard, mid, and advanced-range reader engines. Capture barcodes over 12.2 m away using the advanced-range scan engine.



12.2 meters
(with advanced-range reader)

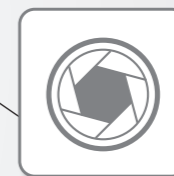


Capture characters with OCR technology by both camera and scan reader.



The availability of a 70° reader angle option makes on-screen data checking easy.

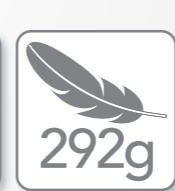
*The 70° scan reader is available upon request.



16MP PDAF rear camera with LED flash



Ergonomic shaping design enables one-hand operation



Sunlight readable



LED backlight keypad



Support Wi-Fi 6, 2x2 MU-MIMO, and Bluetooth 5.1

RK26 series



Development Support	Operating System	Android 12 (GMS), upgradable to Android 14
	CPU	Qualcomm 4290 Octa-core 2 GHz
	Memory	64GB UFS Flash / 4GB LPDDR4X RAM
	Expansion	Micro SD card slot with SDHC (up to 32GB) and SDXC (up to 2TB) support
	SIM	2 nano SIM / 1 nano SIM and 1 eSIM (by request)
	Operating Power	Replaceable and rechargeable 3.8V, Li-polymer 4000mAh
	Working Hours ¹	8 + hours
	Alert	1 tri-color LED, 1 bi-color LED, vibrator
Interface Supported		6-pin I/O & USB 3.1 Gen 1 Type-C with OTG
Wireless Communication	WWAN	EDGE/GPRS/GSM: 850/900/1800/1900 UMTS/HSPA+: B1/B2/B4/ B5/B6/B8 FDD LTE: B1/B2/B3/B4/B5/B7/B8/B12/B13/B17/B19/B20/B25/B26/B28/B66 TDD-LTE: B38/39/40/41 Support VoLTE and Worldwide Band
	WLAN	IEEE 802.11 a/b/g/n/ac/d/h/i/r/k/v/w IEEE 802.11 a/b/g/n/ac/d/h/i/r/k/v/w/ax; MU-MIMO 2x2 (Wi-Fi 6 model only)
	WPAN	Bluetooth® Class II, V5.1 dual mode, V2.1 with Enhanced Data Rate (EDR)
	GPS ²	GPS/A-GPS/GLONASS/Galileo/Beidou
Data Capture	Barcode Scanning	2D imager (Standard range: SE4750SR / SE4100; Middle range:SE4750MR; Advanced range SE5500)
	RFID Read / Write	HF RFID 13.56 MHz frequency which supports ISO14443A, ISO14443B, ISO15693, and Felica Support NFC (Peer-to-Peer, Card Reader, Card Emulation)
	Camera	Rear: 16 megapixels PDAF with LED flash
Physical Characteristics	Display	4" WVGA 480 (W) x 800 (H), Transmissive IPS LCD, outdoor visibility (500 nit), optically bonded Touch Panel
	Touch Panel	Corning® Gorilla® Cover Glass, Capacitive touch supports stylus, bare or gloved fingertip input multi-touch
	Interactive Sensor Technology	Light sensor, Proximity sensor, Motion sensor (Accelerometer, G-sensor), E-compass (Magnetometer), Gyroscope
	Keypad	25-key/28-key numeric keypads with assignable keys, volume up and down keys, left and right trigger keys, power key
	Audio	Speaker (78 dB at 40 cm), microphones with echo and noise cancellation
	Size (LxWxH)	168 x 73.8 x 26.5 mm
	Weight	292 g (with battery)
User Environment	Operating Temperature	-20°C to 50°C / -4°F to 122°F
	Storage Temperature	-30°C to 70°C / -22°F to 158°F (without battery)
	Humidity (non-condensed)	Operating 10% to 90% / Storage 5% to 95%
	Impact Resistance	IP65, 300 tumbles at 0.5 m Standard: 1.5 m (5 ft.) multiple drops onto concrete. With rubber boot: 1.8 m (6 ft.) multiple drops onto concrete.
	Electrostatic Discharge	± 15 kV air discharge, ± 8 kV contact discharge
	Regularity Compliance	LTE : CE, FCC, IC, NCC, TBL, JRL, BIS, WPC, WEEE, RoHS, REACH, CA65, TSCA, BC, NRCAN, NBTC WI-FI 6 ONLY : SRRC, CCC, BSMI, NCC, CE, FCC, IC, WEEE, RoHS, REACH, CA65, TSCA, BC, NRCAN
Development Support		Android 12.0 SDK, HTML 5 API, Reader API (Java/Xamarin)
Application Software		ReMoCloud, EnDeCloud, ADC, WMDS, APPLock, Terminal Emulator, BT Printer Mate, Device Health, SIP Controller, Software Trigger, Signature Capture, EZedit, CipherLab Assistant Service, Ping Tool, Wireless Initiator, IntelliWorker, Reader Config, Button Assignment, HF RFID Config, EZConfig, Enterprise Setting, Barcode To Setting, LogGen, Agility Intelligence, Cloud Message, EZcheck
Certified Application		ReMoCloud, EnDeCloud, SOTI MobiControl, VMware Workspace ONE, Ivanti Wavelink Velocity
Accessories		Charging and communication cradle, USB snap-on cable, Hand strap, Rubber boot, Pistol grip, 4-slot battery charger, Multi-slot Terminal charging cradle ² , UHF RFID reader ²
Warranty		1-year standard warranty

1. Minimum hours under WLAN and 2D scanning per 20 seconds, LCD 50% backlight and speaker on (volume is default) at 25°C, RFID off / Bluetooth® off / IEEE 802.11 a/b/g/n/ac on. The test is based on one broadcasting packet per second.
2. GPS function is only available for WWAN models.

ACCESSORIES



	Headquarters CipherLab Co., Ltd.	12F, No. 333, Sec. 2, Dunhua S. Rd., Da'an Dist., Taipei City 106033, Taiwan Tel: +886 2 8647 1166 Fax: +886 2 8732 3300
	CipherLab China	3115 Room, No.317 Xianxia Road, Changning District, Shanghai, China 200050 Tel: +86 21 3368 0288 Toll Free: +86 400 920 0285 Fax: +86 21 3368 0286
	CipherLab USA	2552 Summit Ave. STE 400 Plano, Texas 75074, USA Tel: +1 469 241 9779 Toll Free: +1 888 300 9779 Fax: +1 469 241 0697
	CipherLab Europe	Cahorslaan 24, 5627 BX Eindhoven, The Netherlands Tel: +31 (0) 40 2990202